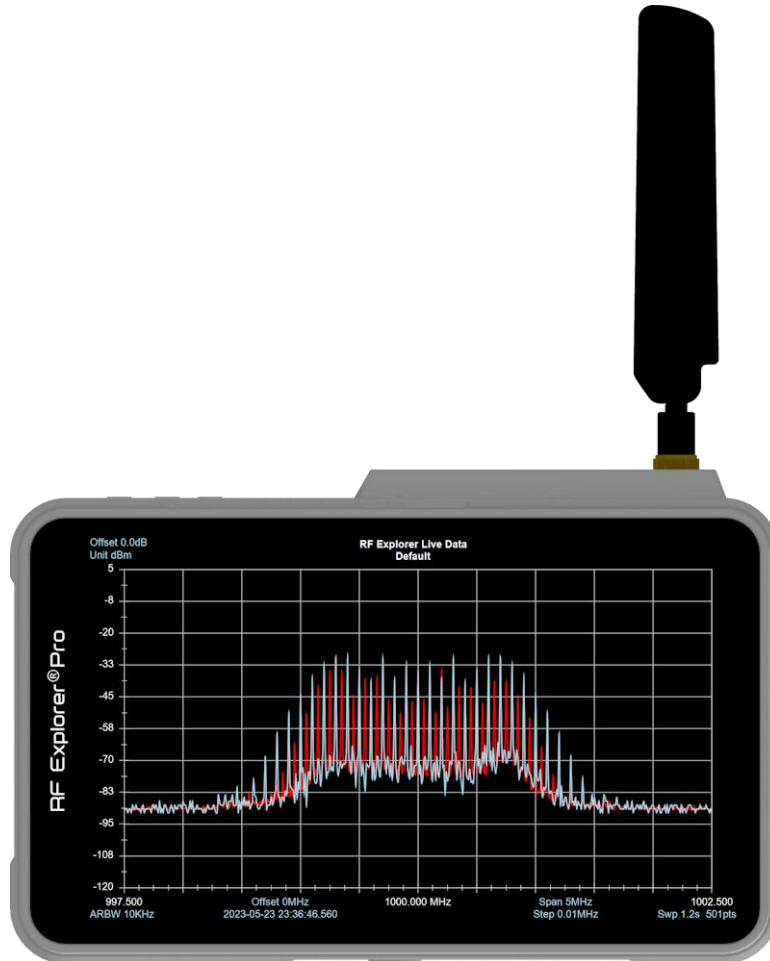


# RF Explorer® Pro

RF Explorer Pro is an advanced, 3rd generation, high-performance multi-purpose RF instrument



## Cumulative Release Notes

Firmware Version 1.18

*This Release Notes document complements the [RF Explorer Pro User Manual](#)*



*Please consider the environment before printing this document.*

## Firmware Upgrade Instructions

Here are the simple steps to upgrade documented in this link: [RF Explorer Pro Update Page](#)

Should you encounter any issues or need further assistance, please don't hesitate to open a [support ticket](#).

# Version 1.18

Release date: CEST Aug 30, 2024

## Enhancements:

- **7.5GHz Support in SA and ZS Modes**

Added support for frequency range extension up to 7.5GHz in Spectrum Analyzer (SA) and Zero Span (ZS) modes. This feature requires the installation of license RFEPLIC51, available for purchase at <https://register.rf-explorer.com/?r151>

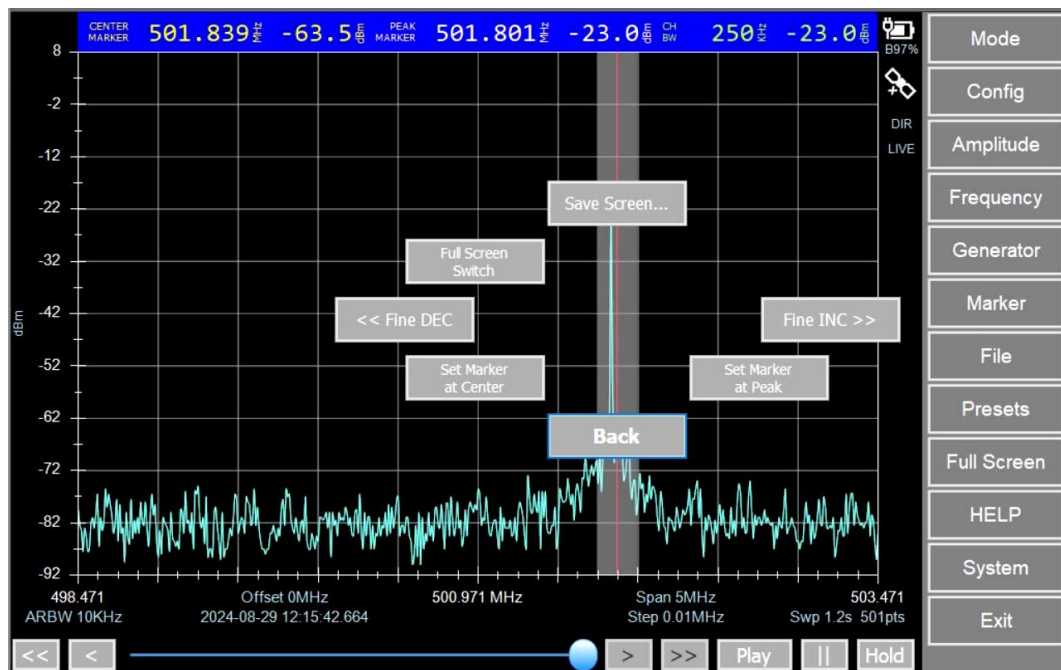
*Upcoming: Native support for WiFi 6 standards across the extended frequency range is under development and will be included in a future release.*

- **Dynamic Marker**

Introduced an advanced marker system with gesture-based interaction for precise amplitude and frequency analysis, including the ability to set permanent markers at center or peak positions.

For more information, refer to the online documentation for markers, which includes a dedicated section on the new Dynamic Marker feature: [Online Manual](#).

*Upcoming: Future releases will include additional enhanced capabilities for advanced markers, such as extended visualization modes and support for up to 100 simultaneous markers.*



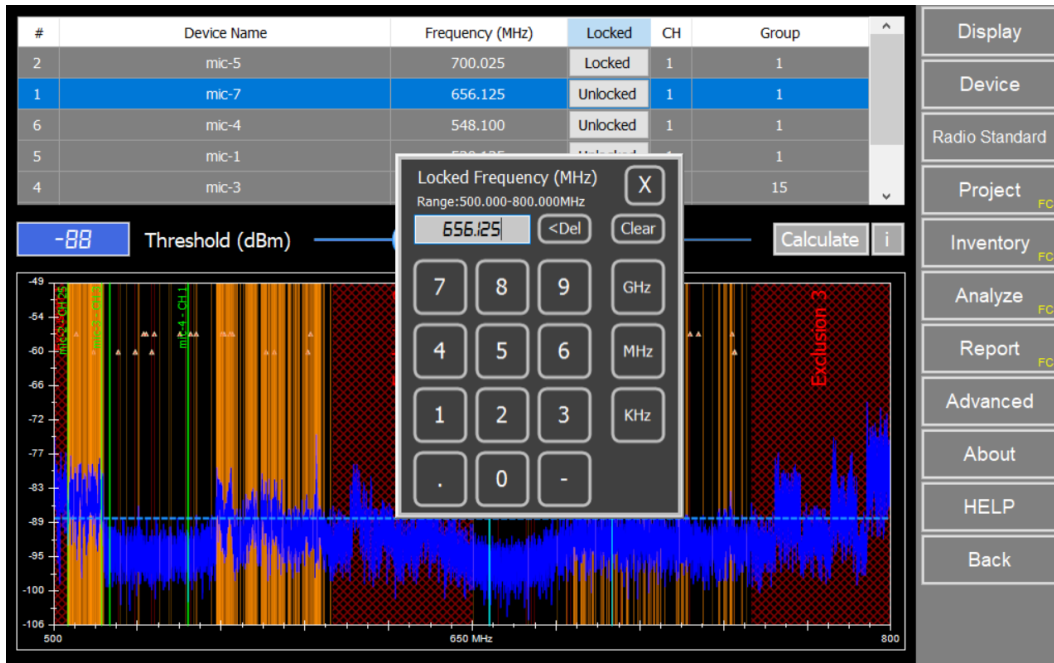
- **Faster Return from Configuration Changes**

The time required to restore sweep scans after making configuration changes has been significantly reduced. The system now optimizes response times by improving the persistence of configuration settings, minimizing disruption.

- **Frequency Coordination Device Frequency Lock**

A new feature allows users to set a fixed frequency on any device, making it permanent and preventing the coordination algorithm from changing the frequency while it is locked. This ensures that specific devices can maintain a fixed frequency, while others may be dynamically adjusted based on coordination parameters.

For more information refer to [Online Manual](#)



- **Waterfall Markers**

A new vertical line now indicates marker positions on the waterfall display, enhancing visibility and event tracking during spectrum analysis.

- **Improved Sleep/Resume Behavior**

The sleep/resume functionality has been enhanced to allow faster and more reliable transitions. A short press of the power button puts the device to sleep, with a subsequent short press resuming operation, same as previous versions. The internal RF status is improved and managed consistently during these transitions.

- **System Button License and Firmware Detection**

The [System] button now automatically scans connected USB drives for firmware upgrades and license files. This eliminates the need for manual navigation through File Explorer during future upgrades.

- **Installer Check on Boot**

The device now checks for available firmware upgrades on USB drives during the boot process. If an upgrade is detected, the system will automatically prompt the user to confirm installation.

## Version 1.16

Release date: CEST July 02, 2024

### Fixes:

- Improved handling of device configuration settings. Prior to this improvement, some configuration settings may have incorrectly alerted of invalid values.

## Version 1.15

Release date: CEST June 25, 2024

### Fixes:

- Improved Spectrum Analyzer mode scanning. This version enhances sweep scanning in certain configurations where the original scanning may not correctly adapt to the noise floor. With this version, all frequencies and ranges, regardless of the configuration, will properly handle the noise floor.

## Version 1.14

Release date: CEST June 08, 2024

### Fixes:

- Improved handling of Presets and Configuration settings. Prior to this fix, the default Preset might not be properly handled and could produce unexpected results.
- Corrected WiFi mode clickable labels. Before this fix, sometimes the WiFi mode might not correctly layout labels on the screen, leading to incorrect actions when clicked.
- Defaulting to Factory Reset now correctly resets temporary data related to Frequency Coordination and Cable Test modes. Prior to this fix, some temporary data might not have been eliminated and remained as valid data.

## Version 1.13

Release date: CEST May 29, 2024

### New Features:

- **Configuration backend data updated.** This new code uses a robust, compact, and efficient embedded database to store all configuration settings. In earlier releases, the software used a collection of XML files, which sometimes led to some settings corruption when the device went to power sleep or powered down due to critically low battery. This risk is eliminated with the new database system.
- **Improved Waterfall 2D refresh time.** A new and improved algorithm now enables faster and more efficient refreshes, reducing CPU usage and increasing battery life.
- **Enhanced sweep refresh time,** including better calculations to present the real-time span between consecutive refreshes.
- **RF Explorer Windows software compatibility.** The new RF Explorer Suite for Windows can now use and display \*.RFE data files created by RF Explorer Pro. In previous versions, the PC software could not display files created by RF Explorer Pro. Please make sure to download the latest Windows software from [www.rf-explorer.com/downloads](http://www.rf-explorer.com/downloads).

### Fixes:

- **Fixed Signal Generator mode.** In previous versions, the button layout might not display correctly.
- **Fixed Step Frequency calculation when loading a Preset.** In previous versions, the system might incorrectly set an invalid step frequency.
- **Fixed clickable labels layout for WiFi and Tracking SNA modes.** In previous versions, some of the clickable labels might not display correctly on the screen.



## Version 1.12

This is internal release only, used for factory production.

## Version 1.11

Release date: CEST February 15, 2024

### New Features:

- Frequency Coordination mode has the following improvements:
  - Radio Standard now displayed in FC mode, a useful feature to show the device channel width in special cases.
  - The full device range (currently up to 6.1GHz) can be used to define custom devices, required for high band audio and video devices in some cases.
- A Factory Default setting is now available in the Config -> Advanced menu to reset the device configuration to factory settings.
- Improved configuration settings consistency checks. Previously, some units with low battery could suddenly power off and partially save the configuration settings. This has been improved to automatically restore from the last internal backup.
- Autodelete old files will now only delete files from the internal device folder; it will no longer delete files from the USB drive.
- Cable Tester mode now provides additional tolerance for small cables, accounting for potential loss in connectors.

### Fixes:

- Fixed incorrect preset frequency configuration calculations when RBW changed. Prior to this change, a restored preset might not always display the expected frequency configuration.

## Version 1.10

Release date: CEST January 05, 2024

### New Features:

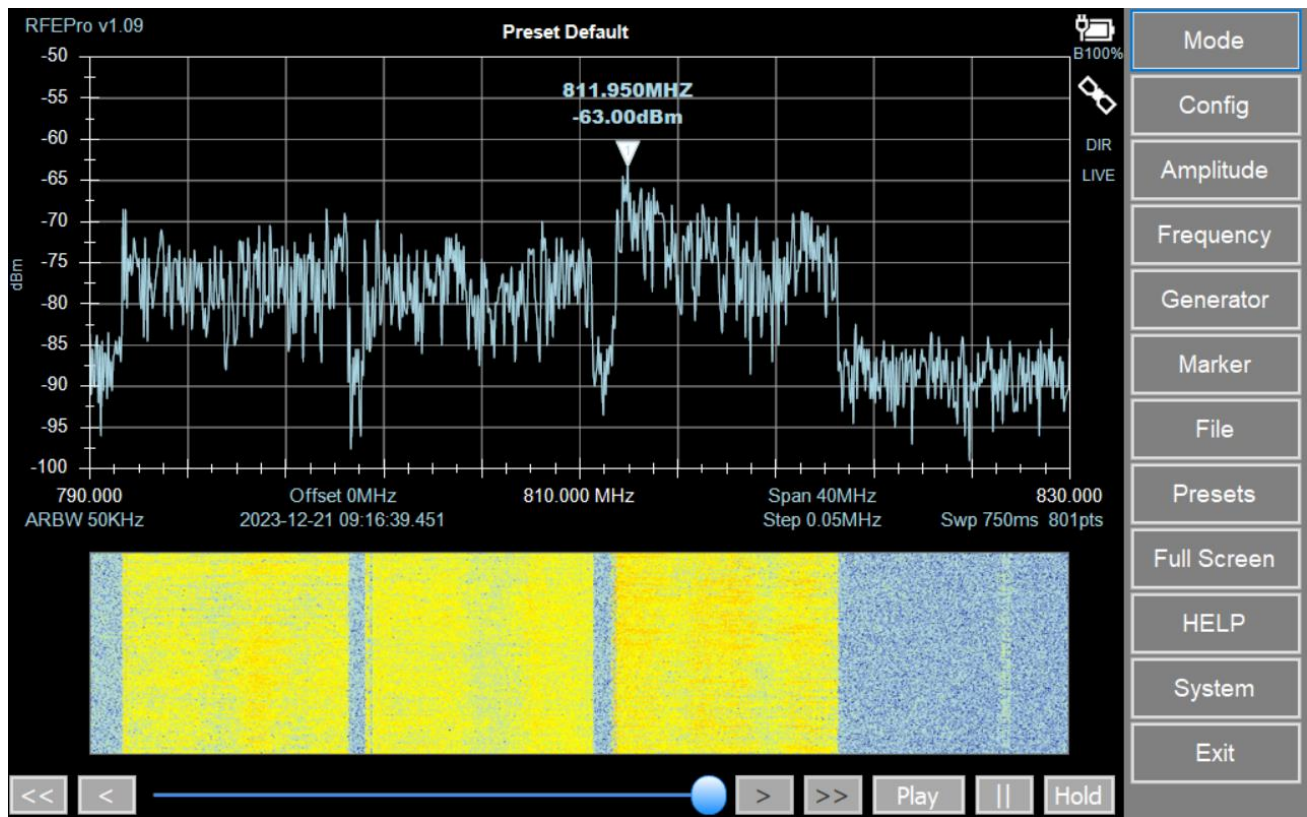
- The Frequency Coordination mode now includes an information button [i] that shows the current coordination summary in the “Analyze” menu.

### Fixes:

- Manual RBW (Resolution Bandwidth) mode can now function in any configuration. In the previous version, selecting a manual RBW could introduce an incorrect frequency setting when the device was powered off, leading to an incorrect status upon being powered back on.

## Version 1.09

Release date: CEST December 20, 2023



### New Features:

- A new waterfall spectrometer has been added to the main screen. It can be enabled/disabled, and various options can be selected to change its size, appearance, and detection mode.
- A new simplified, yet powerful Cable Tester mode has been introduced. This mode performs a quick tracking over a cable with a predefined known loss and rapidly reports the cable status without the need for a normalization step or manual consultation of the cable datasheet.
- The new Cable Tester mode requires a license to operate. However, this mode is included in the Frequency Coordination license, so all users with this license can already use the Cable Tester mode free of charge.

## Version 1.08

Release date: CEST October 20, 2023

### New Features:

- Licenses that have been installed are now displayed in the Config -> About screen.
- A confirmation message will appear on the screen after a license file is installed.
- CSV files now use a comma as the default delimiter. This change addresses issues in previous versions where a different default configuration could cause problems when files were exported to other applications.
- QR codes for help now directly link to the relevant manual section.
- A [System] button has been added to the main screen menu, allowing users to access the Windows File Explorer and interact with the OS. This feature is also accessible via the on-screen touch button on the right side.
- Some users reported issues due to sensitive touch buttons. This version offers an option to disable it, although it's not recommended by default. Please check with our Support Team before disabling your touch button with this option.

### Fixes:

- The Frequency Coordination mode now accurately loads and updates frequencies for each restored project. Previous versions might not have restored the frequency range correctly.
- Fixed a problem where Tracking SNA may accept steps > 95MHz. The interface now correctly restrict invalid steps.
- WiFi mode screen now correctly update Top / Bottom amplitude settings, a previous version may ignore this setting.

## Version 1.07

Release date: CEST October 01, 2023

### New Features and enhancements:

- WiFi Analyzer mode for bands 2.4GHz and 5.8GHz released
- In Frequency Coordination mode, users now can add multiple devices to the project inventory configuration screen by first selecting the number of devices they wish to add.

## Version 1.06

Release date: CEST September 01, 2023

### New Features:

- Frequency Coordination mode released

## Version 1.05

Release date: CEST August 11, 2022

### New Features:

- Request user confirmation for Shutdown device on [Exit]

### Fixes:

- Tracking SNA
- Waterfall real time representation



## **Version 1.04**

Release date: CEST July 07, 2023

First version for RF Explorer Pro public release, general acceptance tests completed.

## Disclaimer

RF Explorer is a registered trademark.

This firmware is copyrighted by (C) RF Explorer Technologies, 2010-2024.

For more information on RF Explorer, please visit [www.rf-explorer.com](http://www.rf-explorer.com)

Some of the new features documented may not be available in the user manual until a final release is published.

Certain notes may refer to *beta versions*. While these have undergone extensive testing, they may not have passed the complete formal review and regression tests characteristic of a final version. If you are not comfortable with the potential for occasional bugs or data loss, you should refrain from installing a beta firmware.

Final release versions undergo a comprehensive set of test cases and a formal review process to minimize any potential issues.

By using this firmware, you acknowledge and agree that it is provided "as-is" without any warranties, either express or implied. We expressly disclaim any and all warranties, including, but not limited to, the implied warranties of merchantability, fitness for a particular purpose, and non-infringement concerning:

- a) the program's functionality, modifications, combined works, or aggregate works, or
- b) the results stemming from any projects using the program, modifications, combined works, or aggregate works.

Under no circumstances shall the contributors be liable for damages, be they direct, indirect, incidental, special, consequential, or any other type of damages (including, but not limited to, those resulting from the procurement of substitute goods or services; loss of use, data, or profits; or business interruption), irrespective of the cause and the theory of liability (be it contract, strict liability, or tort, including negligence or any other). This remains true even if the possibility of such damages has been communicated.

By using this firmware, you waive any claims for damages of any kind against the contributors that may arise from your use of the firmware.